



纽西兰南岛之旅

NZ SOUTH ISLAND TOUR

DATE	7 - 17 MAY 2024
DURATION	11D9N
GUESTS	10 pax
FEE	RM6200/pax
FUN LEADER	MOON 阿月
WHATSAPP	+60167405195 / +60143600968



ROUTE

SOUTH ISLAND

- DAY 1** ● KL ✈️ Christchurch
- DAY 2** ● Christchurch – Ashburton
- DAY 3** ● Ashburton – Tekapo
- DAY 4** ● Tekapo – Mt Cook – Tekapo
- DAY 5** ● Tekapo – Wanaka
- DAY 6** ● Wanaka – Queenstown
- DAY 7** ● Queenstown – Glenorchy – Queenstown
- DAY 8** ● Queenstown – Dunedin
- DAY 9** ● Dunedin – Oamaru
- DAY 10** ● Oamaru – Christchurch
- DAY 11** ● Christchurch – Airport



ITINERARY



DAY 1

- Depart from KL / SG, take the overnight flight to Christchurch
- Please note that FUN LEADER will meet and greet everyone in Christchurch airport



DAY 2

- Afternoon arrive in Christchurch, FUN LEADER will pick up everyone at airport
- We will go to supermarket, explore the local lifestyle and purchase some daily snack / food



STAY : CHRISTCHURCH / ASHBURTON



DAY 3

- Drive to Tekapo (3hr)
- Lake Tekapo : Is known for its beautiful milky-turquoise color
- Church of Good Shepherd : Built in 1935 as a memorial church to commemorate early settlers, it is one of the most photographed spot in NZ
- Mt John Lookout Point : At 1029m high, views from atop the Mt John is unbeatable



STAY : TEKAPO



DAY 4


- Drive to Mt Cook National Park (1.5hr)
- Hooker Valley Trekking : The most popular walks in Aoraki / Mt Cook National Park. The scenery is stunning along the trek (Total walk 9km, 4-5hr, beginner track suitable for tourist)
- Lake Pukaki : The lake covers 179 square kilometres with its glacial blue waters

 STAY : TEKAPO



DAY 5

- Tekapo to Wanaka (2.5hr)
- Visit Twizel Salmon Farm
- Lake Wanaka : New Zealand's fourth-largest lake and the seat of the town of Wānaka in the Otago region
- Wanaka Tree : A famous lonely willow tree in the lake

 STAY : WANAKA



DAY 6

- Wanaka to Queenstown (1.5hr)
- Cadrona Bra Fence
- Arrowtown : A historic gold mining town
- Must try Queenstown famous FERGBURGER

 STAY : QUEENSTOWN



DAY 7


- Can choose to join optional activities OR
- Follow FUN LEADER to Glenorchy, a heavenly town. Deep in the mountains, overlooking a lake, you'll find a beautiful village with 450 people.

 STAY : QUEENSTOWN



DAY 8


- Queenstown to Dunedin (4hr)
- Kawarau Bridge : The bridge is mainly used for commercial purpose of bungy jumping
- Cromwell Fruit Orchard
- Baldwin Street

 STAY : DUNEDIN



DAY 9

- Dunedin to Oamaru (1.5hr)
- Dunedin Railways Station (Opened in 1906)
- Baldwin Street : World's Steepest Street
- Night time try your luck to seek for Oamaru Penguins

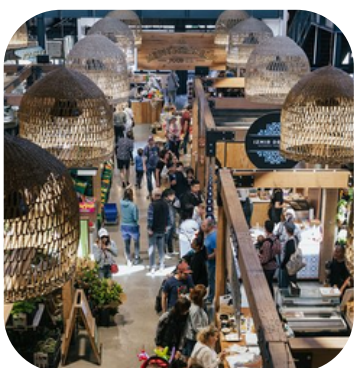
 STAY : OAMARU



DAY 10

- Oamaru to Christchurch (3hr)
- Christchurch area : Cashmere Hill, Christchurch Cathedral, Cardboard Cathedral, Botanic Garden

🏠 STAY : CHRISTCHURCH



DAY 11

Early morning send to airport, tour ends.

✈️ SAFE FLIGHT!



DAY 12

Reach home, have a good rest and see you again!

PRICE INCLUDE

- Christchurch airport pickup and dropoff
- Private air-con vehicle (12 seater)
- Petrol, parking and toll fee
- 9 nights accommodation at local motel or holiday villa / vacation home
- FUN leader cum driver
- NZeTA application
- NZ Conservation and Tourist Levy fee

PRICE EXCLUDE

- ✗ Flight ticket KL / SG - CHRISTCHURCH (Estimate RM4400 - RM5000+)
- ✗ All meals (Estimate NZD600 -700)
- ✗ Personal Travel Insurance
- ✗ Personal expenses
- ✗ Optional tour activities

OPTIONAL TOUR / ENTRANCE TICKET

- Milford Sound Coach & Cruise (NZD220+ per pax)
- Queenstown Skyline Gondola (NZD40+ per pax)
- Oamaru Penguin Show (NZD40+ per pax)
- Skydiving (NZD400+ per pax)
- Bungy Jump (NZD220+ per pax)
- Zip Ride (NZD30+ per pax)
- Queenstown Shotover Jet (NZD150+ per pax)
- Queenstown Ice Bar (NZD35+ per pax)
- Christchurch Tramway (NZD35+ per pax)

*** All accurate price follows on each activity's official website.

*** Price may vary in 2024.

